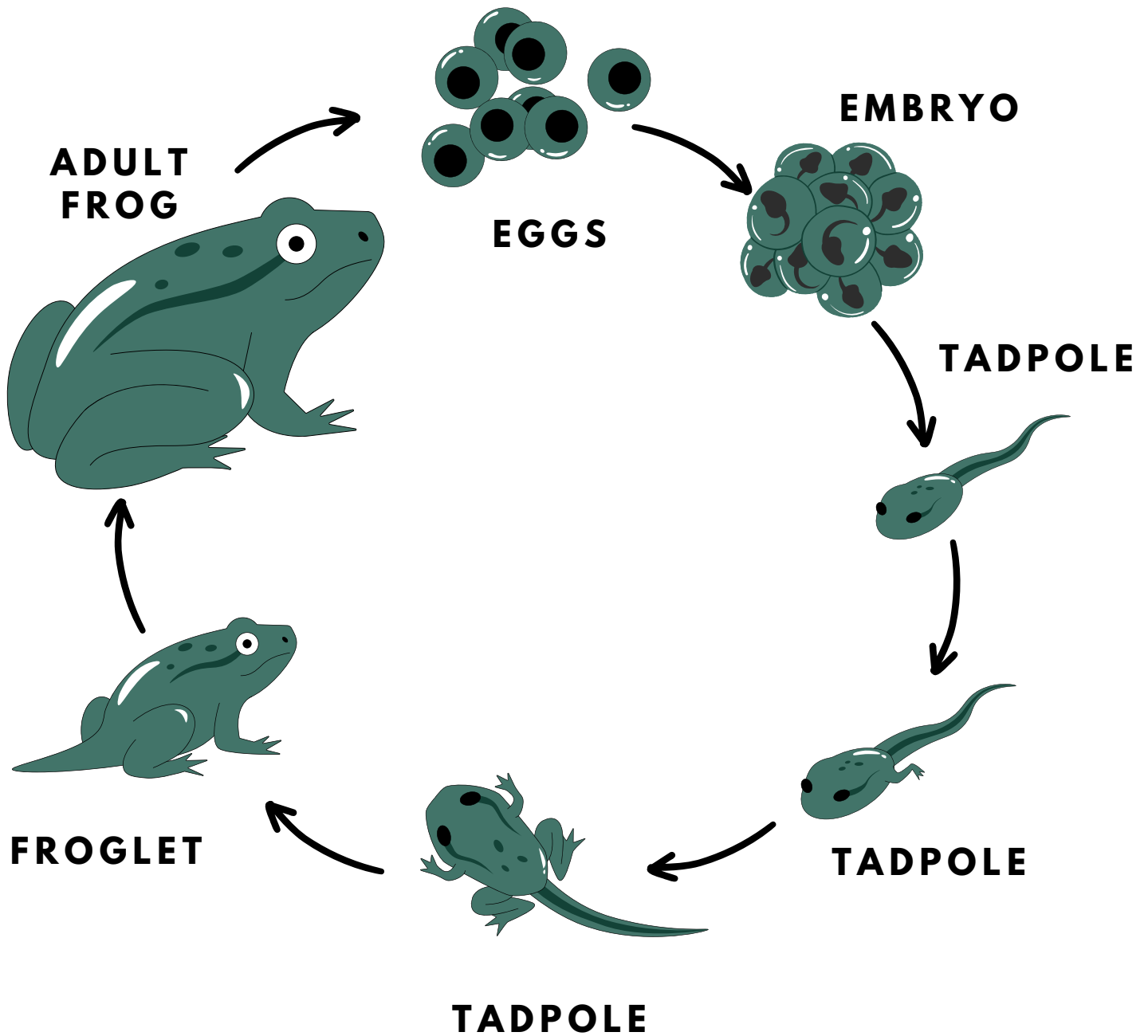
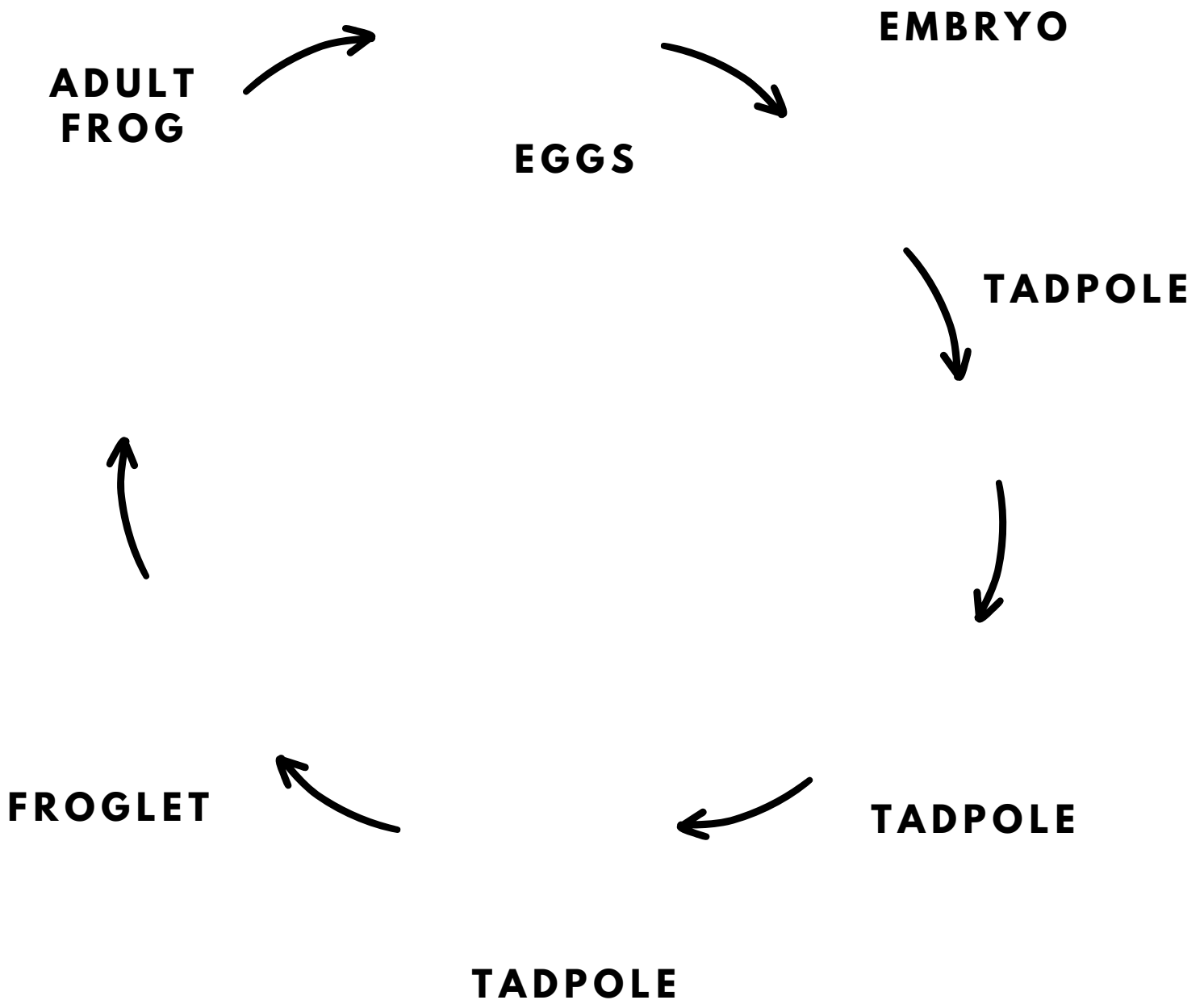


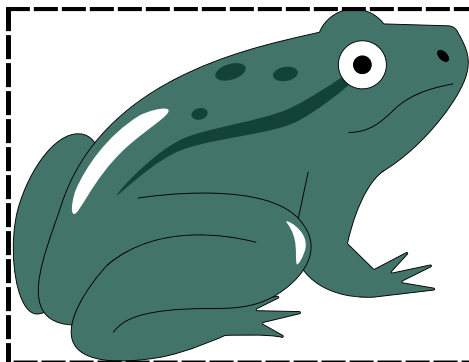
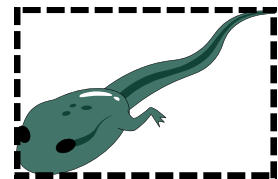
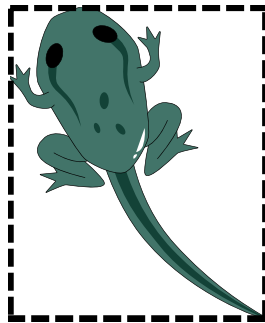
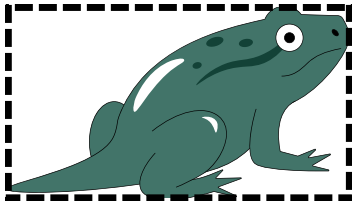
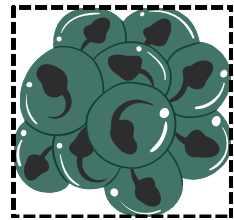
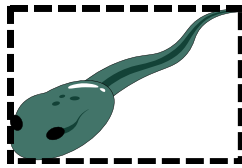
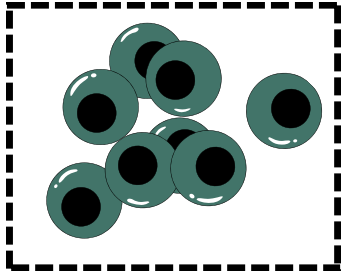
Life Cycle of a Frog



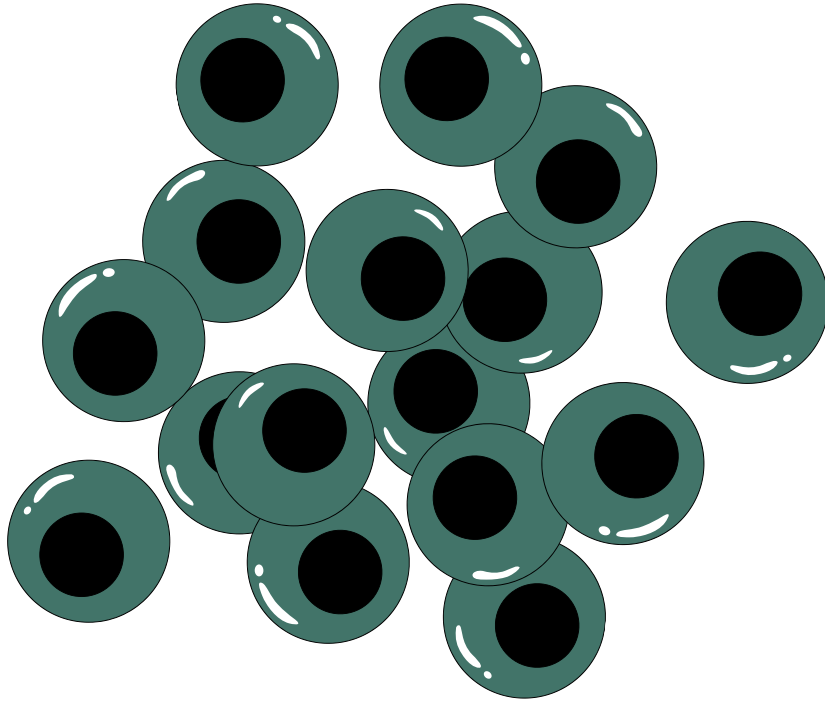
Life Cycle of a Frog



Life Cycle of a Frog

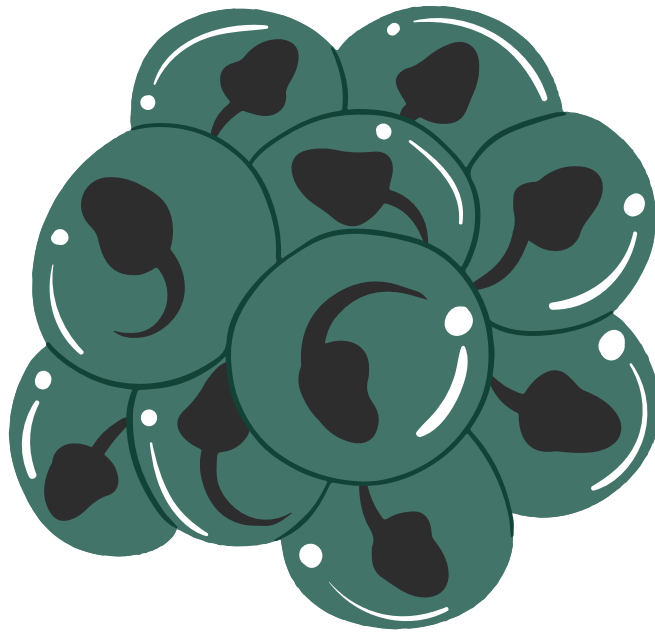


Eggs



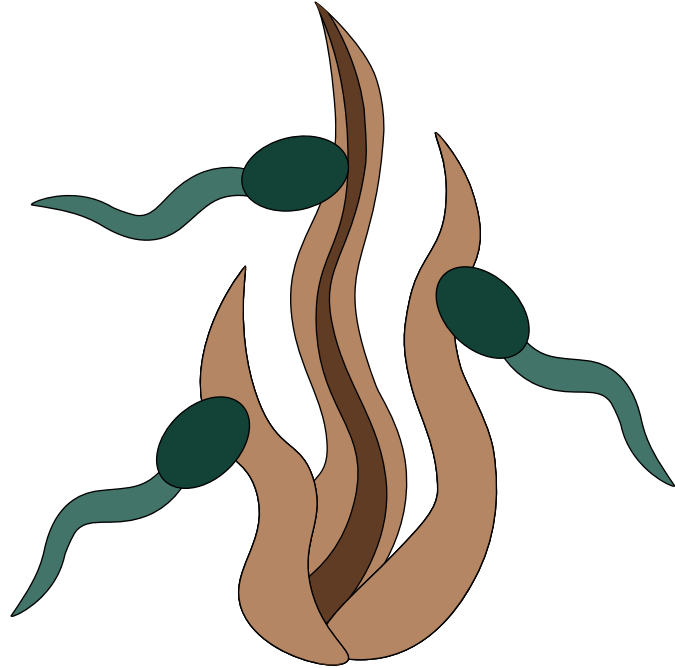
**FROGS TEND TO LAY MANY
EGGS. THESE EGGS ARE
SOMTIMES CALLED
FROGSPAWN.**

Embryo



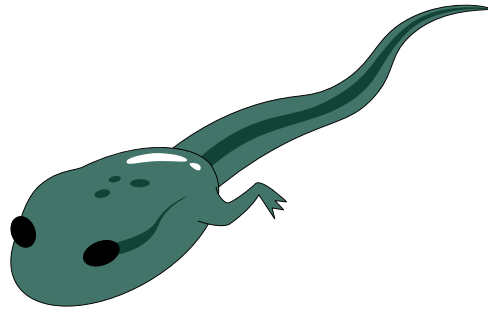
**EMBRYOS ARE FERTILIZED
EGGS. IT TAKES 1 TO 3 WEEKS
FOR THE EMBRYOS TO HATCH.**

Tadpole



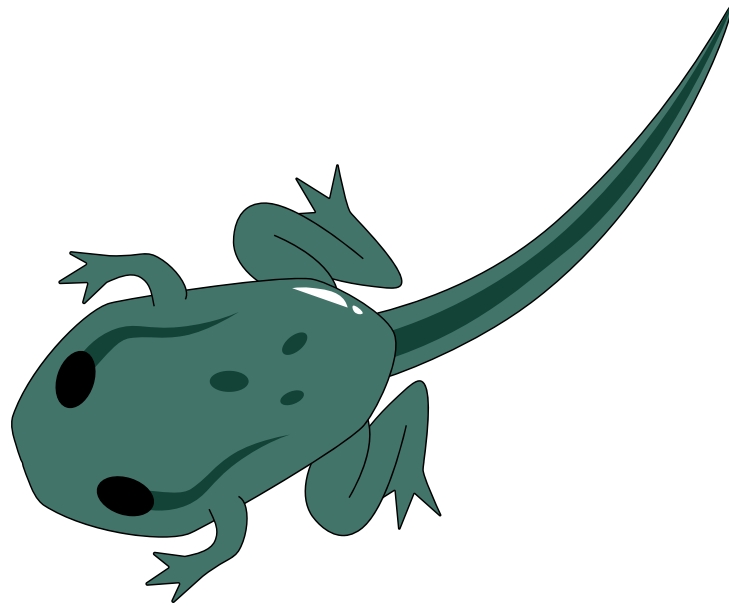
**WHEN TADPOLES FIRST HATCH
THEY IMMEDIATELY CLING TO
THE GRASS. AFTER ABOUT 8
DAYS THE TADPOLES WILL
START SWIMMING AROUND.
TADPOLES EAT ALGAE.**

Tadpole



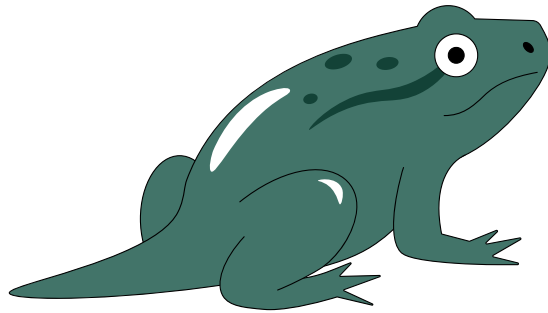
**THE TADPOLE WILL GROW
BACK LEGS AFTER ABOUT 6
WEEKS. THE TADPOLES BODY
WILL ALSO GROW LONGER.**

Tadpole



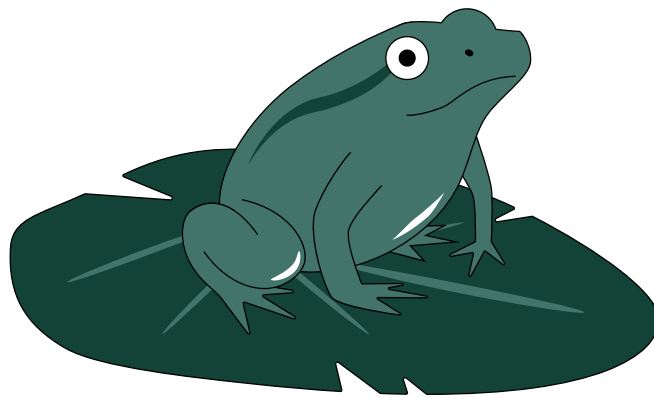
**WHEN 9 WEEKS HAVE PAST
THE TADPOLE WILL GROW
FRONT LEGS. THE TADPOLE
NOW LOOKS LIKE A REALLY
SMALL FROG JUST WITH A
LONG TAIL.**

Froglet



AT 12 WEEKS THE TADPOLE IS NOW A FROGLET AND ABOUT TO LEAVE THE WATER. THE FROGLET HAS A SHORT TAIL AND LOOKS LIKE A SMALLER VERSION OF AN ADULT FROG.

Adult Frog



**WHEN THE FROGLET BECOMES AN
ADULT FROG IT LEAVES THE
WATER. NOW THE FROG WILL FIND
A MATE BEFORE RETURNING TO
THE WATER TO LAY EGGS.**